



Panels	
ID2/2	ID2 - 2 Zone Fire Panel
ID2/4	ID2 - 4 Zone Fire Panel
ID2/8	ID2 - 8 Zone Fire Panel
ID2/REP	Fully Functional LCD Repeater

Detectors & Call Points	
Detectors	
MKII-AOP	Fyreye MKII Addressable Optical Smoke Detector
MKII-AHR	Fyreye MKII Addressable ROR Heat Detector
MKII-AHF	Fyreye MKII Addressable Fixed Heat Detector
MKII-AHF/CS90	Fyreye MKII Addressable Fixed Heat Detector 90 Degree
MKII-AOH	Fyreye MKII Addressable Opto-Heat Detector
MKII-SSB	Addressable Sandwich Sounder Base, Fyreye II Protocol
MKII-CB	Fyreye MKII Common Base
MKII-IB	Fyreye MKII Isolator Base
Manual Call Points	
ZT-CP4/AD	Zeta Addressable CP4 Call Point, Surface Mount, Red
CP4-FMB	CP4 Flush Mount Bezel (Red)
ZT-CP4/AD/WP	Zeta CP4 Addressable Weatherproof Call Point

Sounders & Flashers	
Xtratone Range	
MKII-AXT/R	Xtratone Sounder, Red
MKII-AXT/W	Xtratone Sounder, White
MKII-AXTB/R	Xtratone Sounder Beacon, Red plastic, White flash
MKII-AXTB/W	Xtratone Sounder Beacon, White plastic, White flash
Raptor Weatherproof Range	
ZRAP/R	Raptor Weatherproof Sounder, Red
ZRAP/W	Raptor Weatherproof Sounder, White
ZRAPB/R	Raptor Weatherproof Sounder Beacon, Red Plastic, White Flash
ZRAPB/W	Raptor Weatherproof Sounder Beacon, White Plastic, White Flash

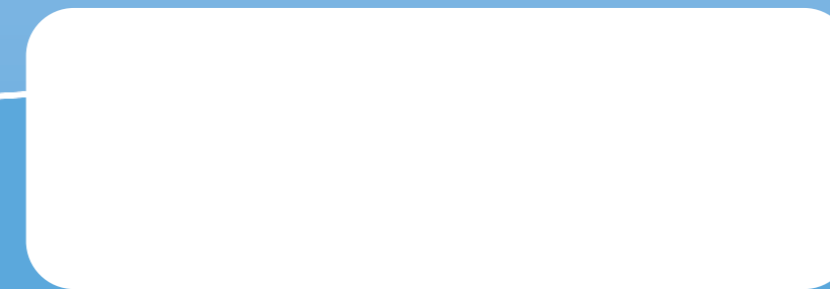
Communicators	
GSM-COM	GSM Communicator - 2 input, 2 output

Interfaces	
ZAI01/230	Mains Switching I/O Unit
ZAI0-MI	Addressable Input/Output Module
ZAI-MI	Addressable Input Module
ZAZM-MI	Addressable Zone Monitor Module
ZASC-MI	Addressable Sounder Control Module

LED Remote Indicator	
MKII-ARL/W	Remote LED Indicator (Wall Mounted)
MKII-ARL/C	Remote LED Indicator (Ceiling Mounted)



Available now from:



Assessed to ISO 9001: 2008
Certificate number 330



Tel: +44 (0) 1792 455 175
Fax: +44 (0) 1792 455 176

Email: info@zetaalarmsystems.com
Web: www.zetaalarmsystems.com

Detection House
72-78 Morfa Road
Swansea
SA1 2EN
United Kingdom



The Intelligent 2 Wire Fire Detection System for Professionals



Summary

The Zeta Alarms Limited Infinity ID2 panel is a single loop addressable panel based on our highly popular Simplicity Plus system. We've taken all the best Simplicity features, and re-engineered it into a smaller enclosure to help with smaller jobs on a tight budget.

The ID2 uses our MKII Protocol, so can run any of our addressable devices. Detectors, call points, interfaces and sounders can all be connected to the same addressable loop.

While the ID2 is a single loop panel, it has the option to allow the system to be wired as 2, 4 or 8 radial circuits. This feature would allow the ID2 panel to be used to replace an existing conventional panel, replacing the devices, but keeping the existing wiring. This feature can also be used for new installations, where the building layout makes radial wiring more convenient than wiring as a loop.



Standards

The ID2 fire alarm system has been designed to meet the full requirements of BSEN5839 part 1 and BSEN5839 part 6. The control panel has been designed to meet EN54 part 2 and EN54 part 4.



Addressing

To remove the confusion about which address is in which zone, the ID2 panel splits the DIP switch into 2 Sections, Zone and ID. Switches 5,6,7 & 8 represent the zone, and switches 1,2,3 & 4 represent the ID inside that zone.

So all devices with the same 5,6,7,8 switch settings are in the same zone. (see ID2 Smartphone App for more details)



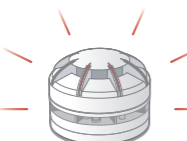
Alarm Indication

The ID2 has the option to add a 20 character zone description, as well as a 20 character device description, allowing the panel to give a more precise description of where an alarm has occurred.



Installation & Commissioning

After learning the loop, the panel displays a summary of the devices it has found. This can then be checked against the system specification.



Detector With Sounder

If a sounder is needed at a particular location, a sandwich sounder can be fitted to any detector.



Alarm Verification

Each smoke detector can be easily programmed to verify an alarm before a full evacuation. In the event of an alarm only the detectors sounder will ring for a time period to clear the smoke/verify the alarm. This makes the ID2 perfect locations where occasional unwanted alarms from cooking or other phenomena may be expected.



System Monitoring

Since every device is monitored constantly and communicates with the panel at a maximum interval of 7 seconds, any malfunction in any device will be reported by the panel. This of course will include the exact location of the device.



Alarm, Fault & System History

The ID2 includes a 2048 event history that stores all alarm, fault and system events.



Zone Check

The ID2's Zone Check facility helps identify potential addressing problems by illuminating the LEDs of all devices in the selected zone, allowing the installer to check devices are fitted as expected without having to check the detectors dip switch.



ID2 Smartphone App

The ID2 smartphone app allows you to enter a zone, and an ID, and will show you the address switch settings needed for that. (available for iOS and Android)



Cable Break Protection (Loop Wiring Mode Only)

In the event of a cable break, the panel will report the break. The panel powers the loop from both sides, so if there is just one cable break, all devices should remain operational. Viewing the devices screen will show if that device is seen from side A, or from side B, which will help locate the problem.



Cable Short Circuit Protection

In the event of a short circuit, short circuit isolators will operate to keep part of the loop operational. Short circuit Isolators are available in call points, Interfaces, or as a stand alone isolator base.

Additional Features

- ✓ One man walk test facility
- ✓ Ability to isolate zones/sounder circuits
- ✓ High visibility blue LCD screen as standard
- ✓ Full range of loop powered devices available
- ✓ Auto configuration for easy set up
- ✓ Ability to manually turn on detector LED to help locate a device
- ✓ Automatically turns on device LED in the event of a double address to help locate the problem

